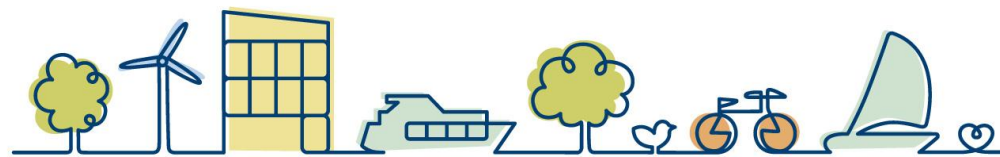




gemeente Langedijk



Waterways for Growth

Revitalization harbour/harbour square Broek op Langedijk



gemeente Langedijk

Within WP2 Langedijk has to do 2 investigations about:

- a. Smallscale entrepreneurship
- b. Transferpoints

Short ago an investigation about the touristic and recreational possibilities of the harbour and harbour square of Broek op Langedijk has been added

Why? At first some images of the harbour

View at Harbour/ Koolsail 2010



Overview 1



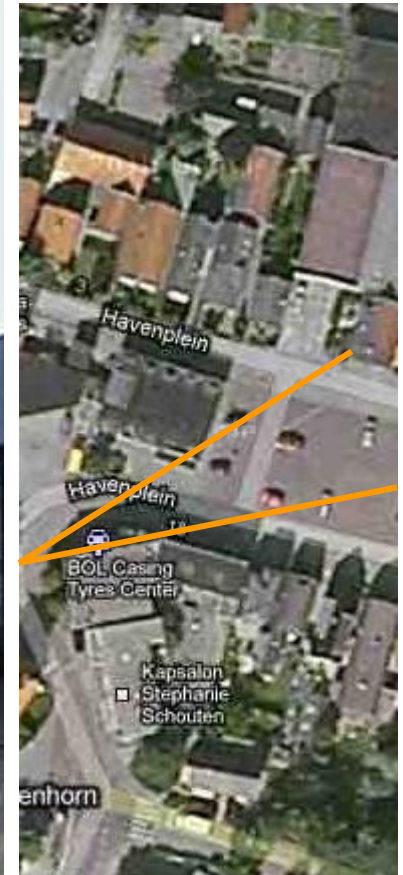
Overview 2



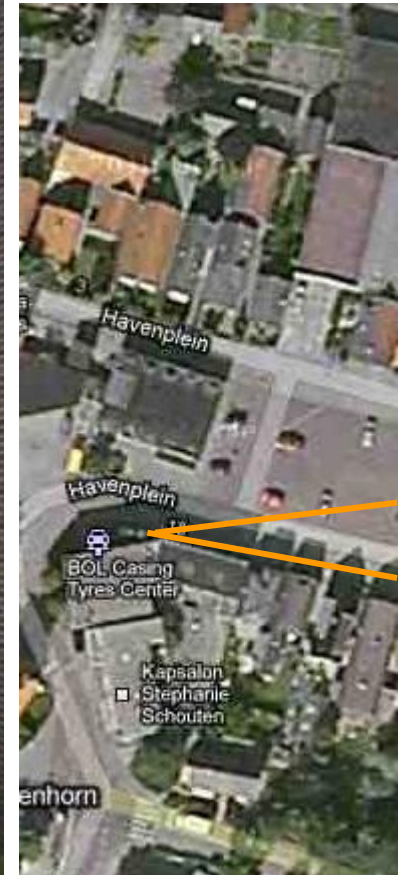
Corner Dorpstraat/Harbour Square



Overview Harbour Square



Prins Hendrikkade 1



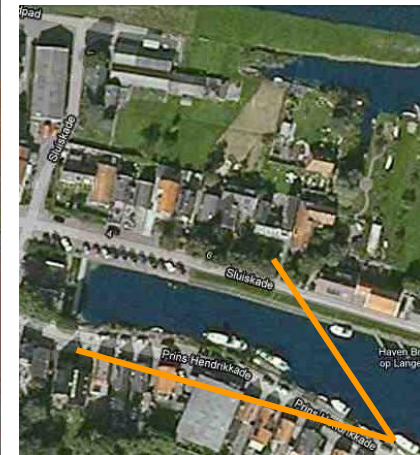
Prins Hendrikkade 2



Prins Hendrikkade 3



Prins Hendrikkade 4



Prins Hendrikkade 5; view at lock



Lock between canal and polder



Harbour square 1/ services



Harbour square 2/snack bar



Harbour square 3/parking



Harbour square 4/open field, former super market



Sluiskade 1



Sluiskade 2



Sluiskade 3



Spatial planning

In the Netherlands spatial development plans have to be renewed after 10 years validity:

- In 2010 has been started with the renewing of the spatial development plan for the village Broek op Langedijk
- In coöperation with the inhabitants and an urban consultant company, an areal vision Broek op Langedijk has been made. This vision defines the spatial quality and identity in terms of (cultural) historical and landscape development
- Three hotspots are selected for special attention and redevelopment: one of these is the harbour of Broek op Langedijk

Content areal vision

In the areal vision the items mentioned about the harbour are:

- Enhance the quality of public space
- Re-organise the car parking
- Develop the spatial connection between the harbour square and the Dorpsstraat
- Investigate the touristic and recreational possibilities

The touristic and recreational possibilities can be subject of investigation.

The results can be used for the new spatial development plan.

Because of its relationship with the two other WP2 investigations, a combined investigation is essential for integral vision about the development of the harbour.

Advice SRN

For the board proposal about the combined investigation, an advice of Stichting Recreatietoervaart Nederland (SRN) has been used.

Summary of this advice:

- The actual lay-out of the harbour is okay for passers-by
- Make a footpath at the southside of the harbour
- Minimal facilities for a passers-by harbour are present
- For opening-up the area these facilities should be replaced, a better spatial relation between square and harbour is desirable.

Combined investigation

The board of the municipality of Langedijk has agreed with a combined investigation.

- a. Smallscale entrepreneurship
- b. Transferpoints
- c. Revitalization harbour and harbour square

Questions? Remarks? Suggestions?