



WP2 'Business & Product Development'

Ongoing work on the web-based tools "Short Update"

Telemark, 2 June 2011

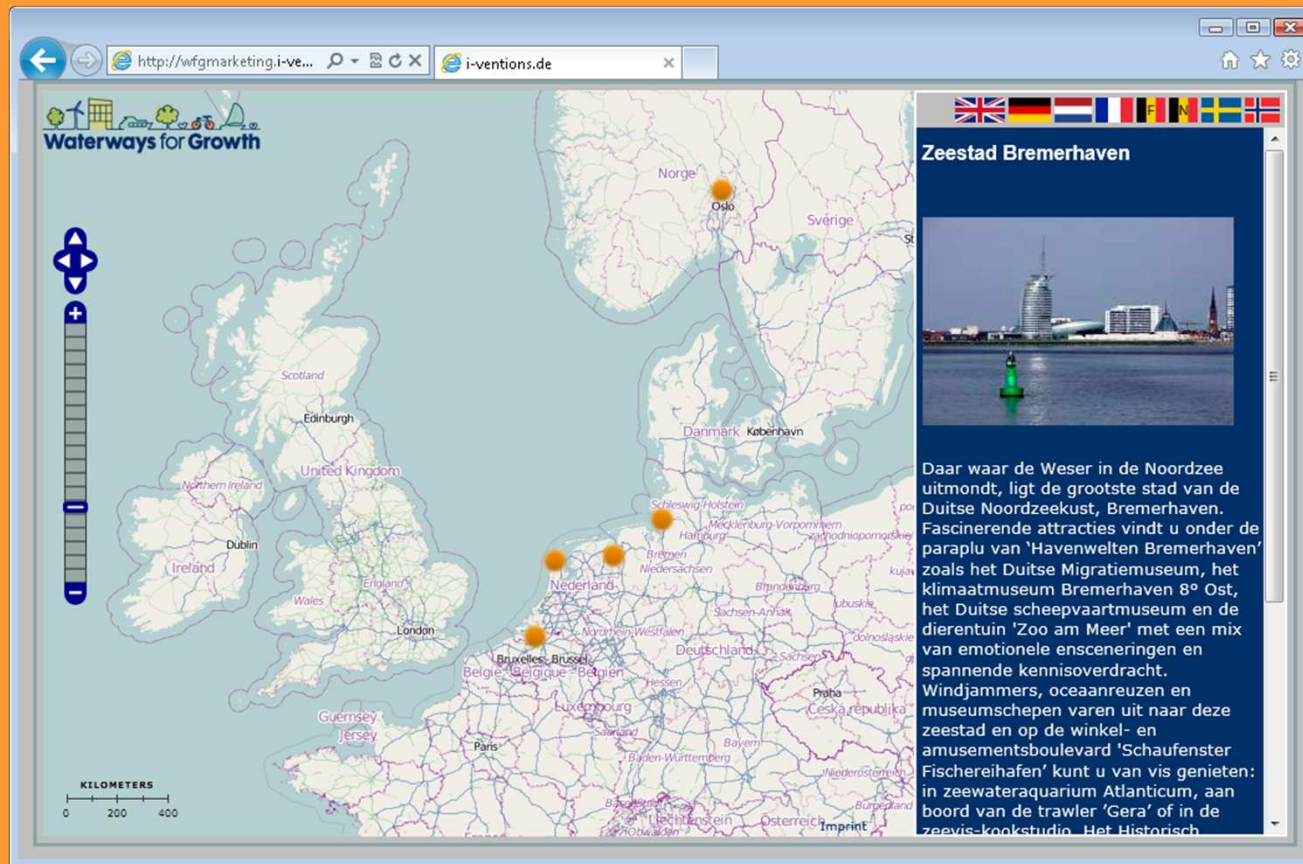
Presentation by
Andreas Weber (monavista GmbH)
on behalf of **BIS GmbH**

Update: Information about the work...

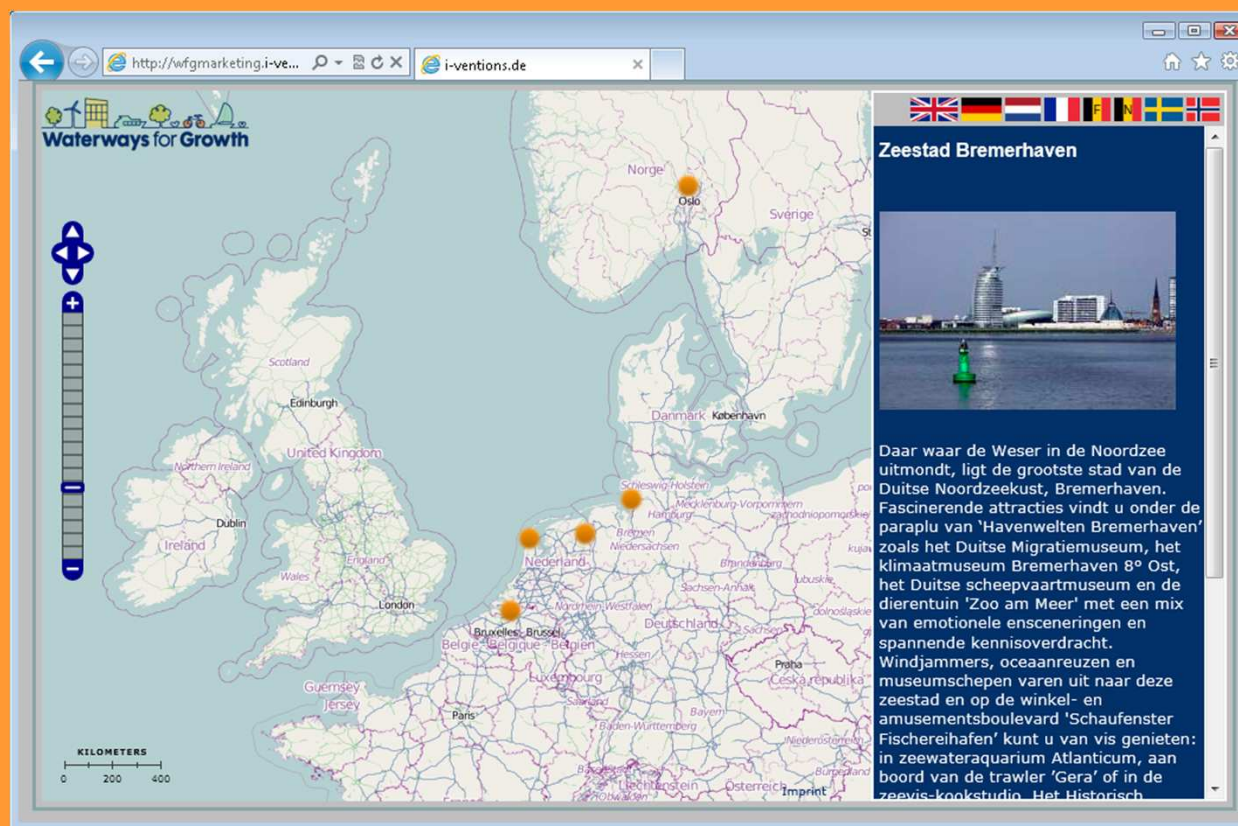
>> Project-Information / -status of:
the **Web-based tools**

>> Further working steps

We started with the Idea: Cross promotion of partner regions ...



Status: Several languages and contents implemented, but some inputs are missing...



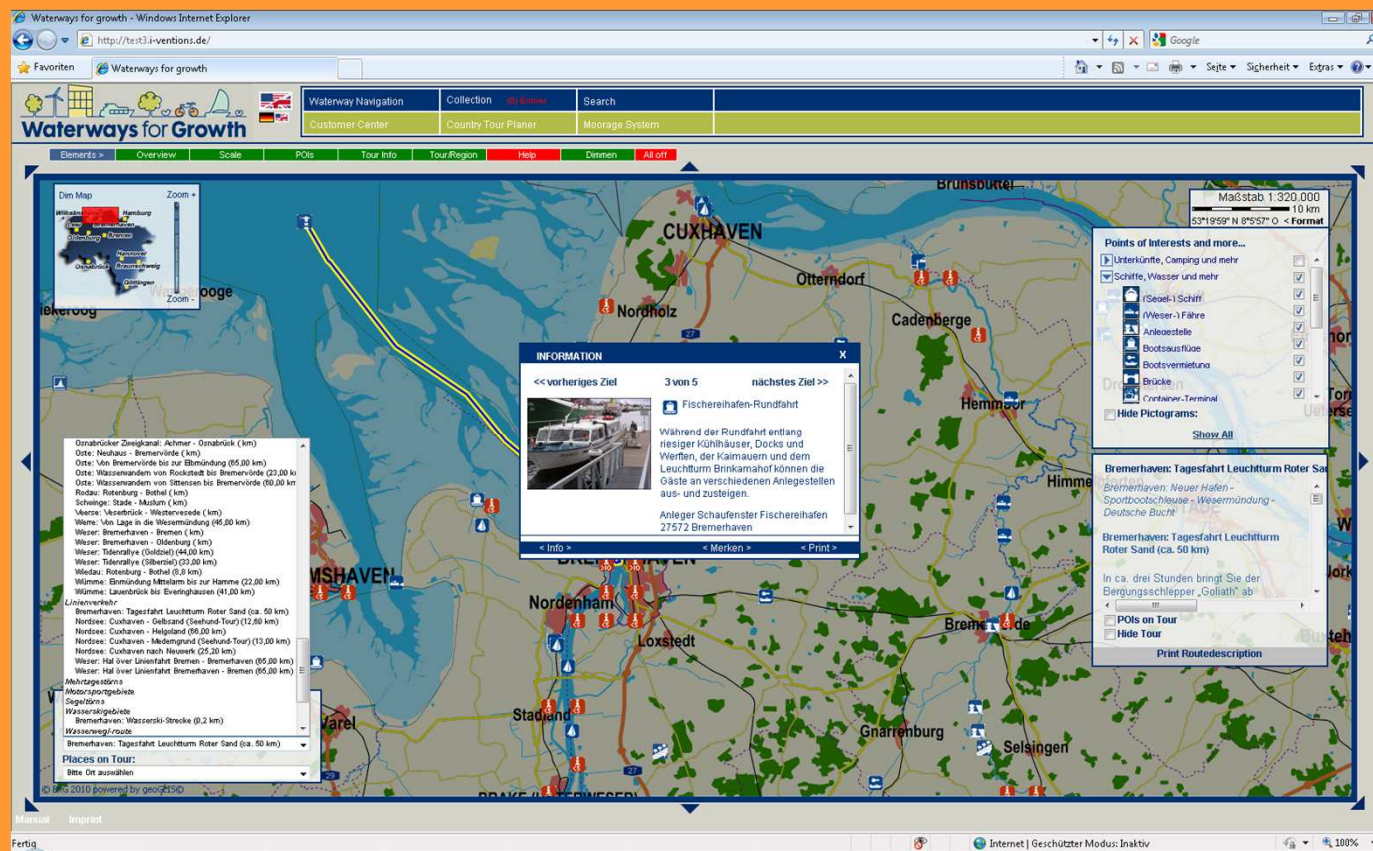
Next step is the partner presentation (linkage / embedding the tool)...

The screenshot shows a web browser displaying the Bremerhaven website. The main content area features a map of the Telemark Canal region in Norway, titled "Waterways for Growth". An iframe is integrated into the page, showing a detailed map of the region. A new window is opened over the main page, displaying a detailed view of the "Zeestad Bremerhaven" (Seaside City Bremerhaven) area, including a map and text describing the city's maritime heritage and attractions.

iframe integration

or open the feature in a new window...

Status: e-Routing / e-Marina Information System



The screenshot displays the 'Waterways for Growth' web application in an Internet Explorer browser. The main map shows a route through the Cuxhaven region, with a yellow line indicating the path. A sidebar on the left lists various points of interest and distances, such as 'Ordnungs-Zweigkanal: Achmer - Ordnungsbrück (km)' and 'Bremerhaven - Tagesfahrt Leuchtturm Roter Sand (ca. 50 km)'. A central information window displays details for a 'Fischereihafen-Rundfahrt' (Fishing Port Tour), including a photo of a boat and text describing the tour. A sidebar on the right shows a list of points of interest and a 'Print Routedescription' button. The browser window title is 'Waterways for growth - Windows Internet Explorer' and the address bar shows 'http://test3.i-ventions.de/'.

>> work focused on the maps source (OSM)



e-Routing systems / OSM map sources:

- We establish an „**official local OSM working group**“. Participants are:
 - Local Tourists & Economic Development Departments
 - Local Land Registry office (Katasteramt Bremerhaven)
- We got an official „**letter of support**“ from the local municipality (data use)
- We identify the **major lacks** of the map for the region of Bremerhaven
 - Missing information like areas, streets, POIs, etc.
 - Incorrectness of map information
- We create a first **work- and action plan** to solve problems and enter missing basic map information

>> Quality management of the regional map information

Outcome: OSM User group, Dossier, etc.

OpenStreetMaps as Alternative Digital Source Map
Interreg IV B NGR Project "Waterways for Growth"

The need for map-based presentations of portal contents in the internet remains high. However the issue with maps and their internet presentation goes hand in hand with a series of problems, which can only be comfortably solved by very few suppliers. The most important problems are the scope of use, the transformation of coordinate systems, the completeness (covered area, standards, sheet line system, etc.), the actuality and variability (techniques, formats etc.). Aside from the commercial suppliers Google maps, Bing maps etc. the only serious alternative is the OpenStreetMaps Project (OSM).

What are the essential pros and cons of the OSM-maps in comparison to the commercial concepts such as Google maps? The advantages of Google maps can shortly be summarized: *cost free, international, professional, comfortable and fast*, which are coupled with a series of disadvantages:

A. Actuality of the maps / aerial photographs: copyright issues / date says nothing about the actuality of the data. As an example, from the Federal State of Bremen the aerial photograph used is from the year 2003. This map does not show the touristic major projects from the last few years in the central picture of the city.

B. Quality and accuracy of information on the maps: *Problem map entries*: In respect to soft information (restaurants, hotels etc.) there is a numerous amount of old or incorrect en*tries*. *Problem community-entries*: For a long time the community-entries were est*ablished* considered an additional benefit in the eyes of a broad mass of Google maps. However the clear identity of the sender and with this the quality of the entries mi*ght* become a wasteland of information and data.

C. Terms of use for Google services: *Problem legal security*: For many Google map us*ers* terms of use are too noncommittal. Both in the scope of ones own terms of use and intervention rights which Google grants itself.

Problem Google API: Free use of the maps is coupled to Google's own API. Desp*ite* advantages this aspect is often considered a double security of Google, which is in upon the operator. Additionally it also limits extended presentation forms.

Problem broader use: Google Maps „API Premier“ must be used for advanced service closed/non-public applications. Indicated yearly costs starting at 10 thousand Dollars.

The advantages of the OSM-maps can be summarized as follows: *Cost free / copyri*ght* free, international, flexible, detailed, integrative (community-approach) / extendable / ind*e*pendent and specialized.*

Cost free/copyright free: The legal situation is clearly defined by OSM. The maps can be used. With this in contrast to Google Maps a map section can for example be u*sed* for any purpose and can also be printed out. Mandatory is only the origin of source and th*is* of further usage by others.

Basic paper „pros and cons“ OSM (translated and distributed to the WfG group)

„Letter of Support“

Magistrat
62/3
Bremerhaven, 28.03.2011
33 60 Fax: 2078

M K 6
818 Bremerhaven Touristik
818

Magistratsbeschluss zur Unterstützung des freien Kartendienstes OSM (OpenStreetMap) durch das Amt 62 für den Stadtbereich Bremerhaven

Das Amt 62 beabsichtigt die nachfolgend aufgeführten Magistratsvorlage einzubringen.

* A Problem
OpenStreetMap (OSM) ist ein im Jahre 2004 gegründetes Projekt mit dem Ziel, eine freie Weltkarte zu erschaffen. Es werden weltweit Daten über Straßen, Eisenbahnen, Flüsse, Wälder, ... weil die Daten einestzeiten und kommerziell

http://wiki.openstreetm... / i-ventur.de / dictio.org - Ergebnisse für... / Bremerhaven - OpenStre...
Log in / create account

Page Discussion
Read View source View history Search

Find out more about OpenStreetMap's upcoming license change (translations) (discussion)

Bremerhaven
Bremerhaven is a city in Bremen at latitude 53.540, longitude 8.5765

Bremerhaven, Bremen
Latitude: 53.540, Longitude: 8.5765

Browse Bremerhaven map

Edit map

- Users in Bremerhaven
- GPS traces
- Wallpaper images .jpg, png
- Maplet
- Information/FreeWay
- Check Map Features via Query-to-map
- Check streets with no-names
- Geohack for OSM with more maps

External links:

- OSM Inspector
- Osmapware: last-day, hour, min
- OpenStreetBrowser
- OpenStreetBugs
- MapDust
- Keep Flight
- Casidrive checker
- Public transport
- Wikipedia en

Local OSM user group

The next project steps...

- The finalization of the missing inputs (partner content and translations)...
- The real cross promotion by linkage or embedding into the partner website
- The embedding into the WfG.eu website
- Further / additional information (like the fast, short, cheap, etc. way to reach the partner region)?

